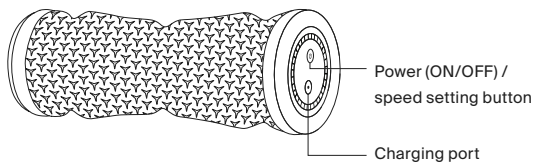


**Let's
get
started**



Meet your new Vyper Go

Side view



Top view



Before you start

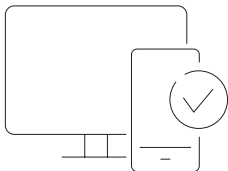
Download the Hyperice App

Get the most out of your Vyper Go, or any Hyperice device with the Hyperice App. Follow along to guided routines, track your progress, and get tips and tricks from the world's best pros.



Register your device

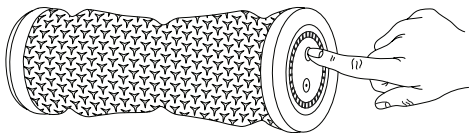
Activate your warranty and ensure easy returns, repairs, or refunds at hyperice.com/register-product.



Start your session

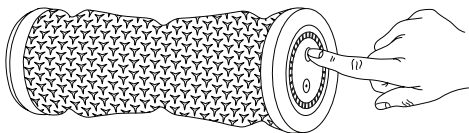
Powering up

Turn your Vyper Go ON by pressing the power/speed setting button for three seconds.



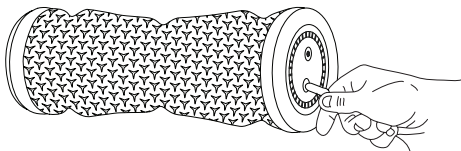
Adjusting speeds

Press the power button once to turn device on to speed level one, twice to turn device to speed level two and three times for speed level three.



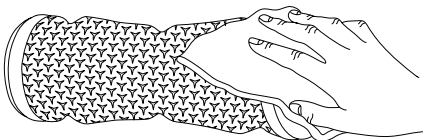
Recharging

Full charge is indicated when I battery level indicator lights stop blinking and remain solid. Only use the provided Hyperice charger.



Caring for your Vyper Go

Use a damp, clean cloth to gently wipe your device. Make sure the power is OFF and the battery charger is not attached. Store in a clean, cool, dry place, out of direct sunlight, when not in use.



We're here for you

HyperCare®

Get award-winning support from our HyperCare team – a group of specialists dedicated to your overall well-being and expert guidance on Hyperice products.



1.855.734.7224



hyperice.com



customersupport@hyperice.com